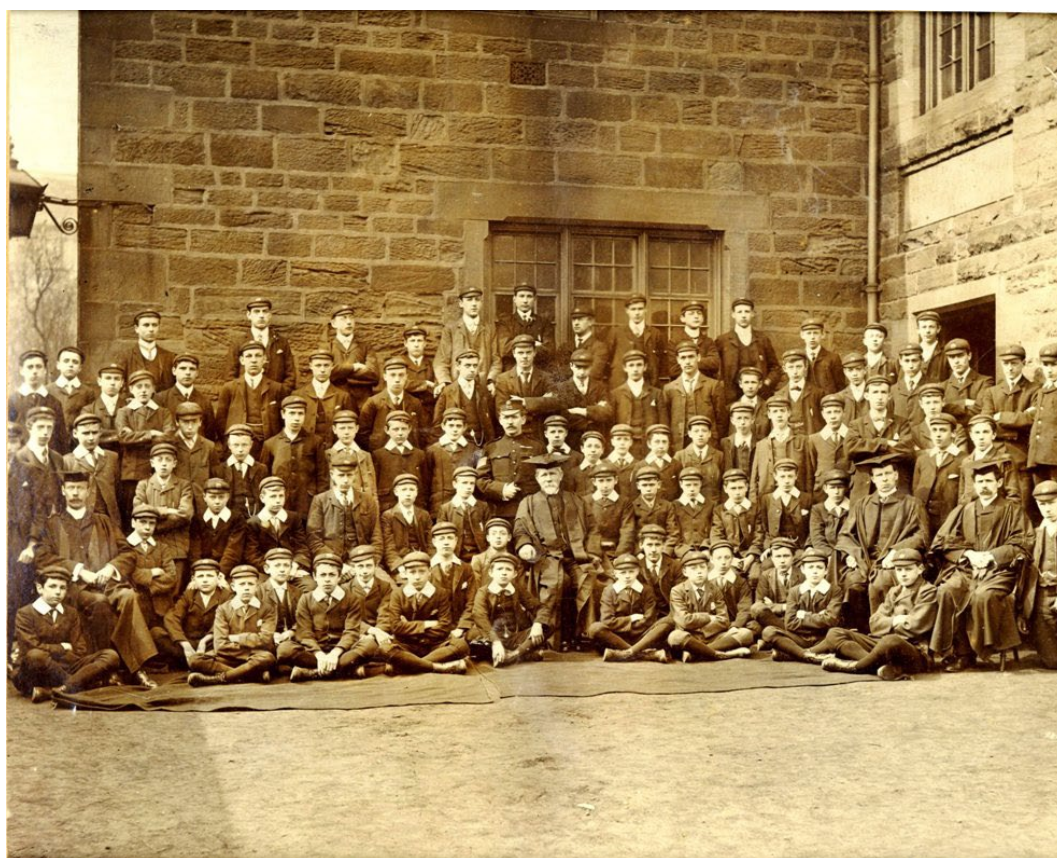


ARCHIVES & LOCAL STUDIES

Guide to Barnsley school collections at Barnsley Archives & Local Studies



ARCHIVES & LOCAL STUDIES



INTRODUCTION TO OUR SCHOOL COLLECTIONS

During the nineteenth century the British and Foreign Bible Society (from 1810) and the National Society for Promoting the Education of the Poor in the Principles of the Established Church encouraged the creation of schools throughout the country. “British” Schools were normally supported by nonconformists and “National” Schools by Anglicans.

The Education Act 1870 permitted the establishment of School Boards and with it “Board” Schools. The School Boards were locally elected to create and administer schools supported by levying a rate. School Boards were abolished by the Education Act 1902 by which elementary education became the responsibility of County and County Borough Councils. Schools Boards became known as District Education Sub-Committees. Barnsley Archives and Local Studies holds records for the following School Boards: Ardsley, Barnsley, Bolton upon Dearne, Cudworth, Darfield, Darton, Dodworth, Hoyland Nether, Monk Bretton, Oxspring, Royston, Tankersley, Thurlstone, Thurnscoe, Wombwell and Worsbrough.

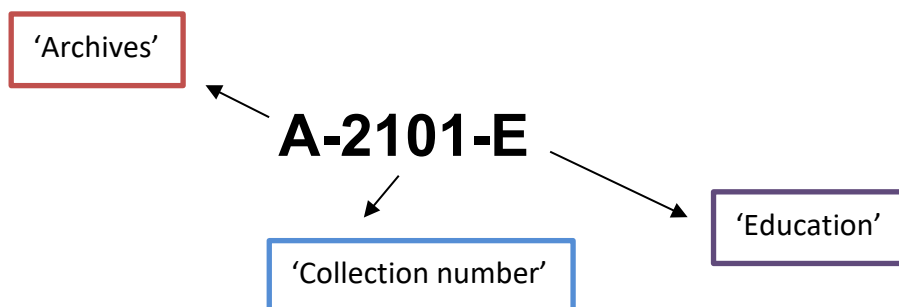
This guide lists schools by area, with an indication of type if known. The School Board records are included under the relevant locality. Please note that the names of schools, along with the sex and age of pupils often changed. Our guides and catalogues attempt to assist the researcher in finding the school of interest by reflecting these changes, but mistakes are inevitable.

The main series of school records are:

- Logbooks – these are the ‘diaries’ of the Headteacher recording daily activities and events at the school;
- Admission registers – these record the entry and departure of a pupil to a school, often giving reason for leaving, date of birth, names and addresses of parents;
- Governors’ minutes – these relate to the high-level administration of the school.
- The collections also often contain correspondence, photographs, printed material and administrative records.

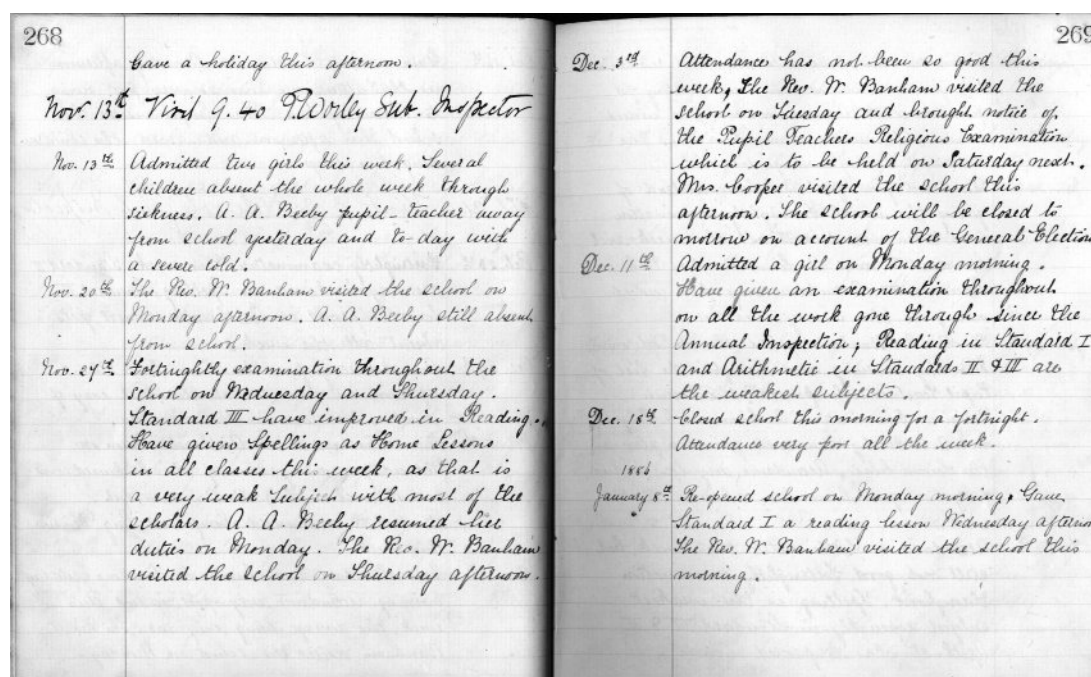
The number given after each school refers to the catalogue number. The catalogues can be consulted in the public searchroom, [online](#) or alternatively you can [telephone](#) or [email](#) the office for further information.

ARCHIVES & LOCAL STUDIES



We do hold a number of further sources that may relate and refer to schools in the Barnsley area. These include printed books, newspapers, guides and programmes. Ask a member of staff in the public searchroom or view the [online library catalogue](#) for further information.

In keeping with Data Protection legislation, we have to impose some access restrictions. In general, entries in logbooks and admission registers made in the last 50 years are not generally accessible, whereas entries in minute books made in the last 30 years are not accessible. This closure is extended to 75 or 100 years for sensitive material. Access restrictions are noted in the relevant catalogues. However, personal information can be obtained from recent and sensitive material by the person it relates to. Consult staff for further information.



An extract from a 19th century logbook.

ARCHIVES & LOCAL STUDIES

ARDSLEY

Ardsley and Darfield District School Board/ District Education Sub-Committee

- Minutes, 1910-1929 (A-2100-E).
- Plan of unknown Ardsley school, n.d. (A-3230-E).

Ardsley Infant School (formerly board/council infant school)

- Logbooks, 1888-1981 (A-2101-E).
- Admission register, 1967-1978 (A-2101-E).

Ardsley Boys' Juniors' School*

- Logbooks, 1888-1950 (A-2102-E).

**Ardsley Juniors' Schools were mixed between 1896-1925, use admission registers in A-2103-E below for boys' entries*

Ardsley Girls' Juniors' School (later Hunningley Juniors' School)

- Logbooks, 1892-1969 (A-2103-E).
- Admission registers, 1904-1923 (mixed); 1929-1951 (A-2103-E).

Ardsley Oakhill Primary School*

- Admission register, 1972-1992 (A-2084-E).
- Correspondence, 1950s (A-2084-E).
- Other miscellaneous items, n.d. (A-2084-E).

**Records prior to Autumn 1996 relate to Ardsley Oaks Junior School*

ARCHIVES & LOCAL STUDIES

ARDSLEY – CONT.

Ardley Oaks (Senior) School (later Oaks Secondary Modern/Comprehensive)*

- Logbooks, 1910-1989 (A-2104-E).
- Admission registers, 1910-1989 (A-2104-E).

**Older registers include the records of primary age pupils before the Oaks schools separated)*

Hunningley Juniors' School, Ardsley*

- Logbook, 1981-1985 (A-2114-E).
- Admission registers, 1959-2012 (A-2114-E).

** See also Ardsley Juniors' School.*

Lees Hill Infant School, Ardsley *

- Admission register, 1972-1982 (A-2084-E)
- Aerial photographs, 1994 (A-2084-E)

**Merged with Ardsley Oaks Junior School to become Oakhill Primary*

ARCHIVES & LOCAL STUDIES

ATHERSLEY

Athersley County Juniors' School

- Logbook, 1948-1977 (A-2105-E).
- Admission registers, 1948-1984 (A-2105-E).

Athersley North Infants' School*

* See A-3516-E – Lawrence Briggs Infant School.

Edward Sheerien School, Athersley

- Admission registers, 1956-1997 (A-1444-E).
- Administrative record and school newsletters 1987-1993 (A-1444-E).
- Photographs, 20th century (A-1444-E).
- Prospectuses, 1982-1992 (A-1444-E).
- Other miscellaneous items, n.d. (A-1444-E).
- Other uncatalogued material, n.d. (A-3389-E).

Lawrence Briggs Infants' School, Athersley

- Logbooks, 1954-1993 (A-3516-E).
- Admission registers, 1972-1995 (A-3516-E).

St. Edwin's Juniors' School, Athersley

- Logbook, 1977-1985 (A-2126-E).
- Admission registers, 1962-1972 and 1984-1985 (A-2126-E).

ARCHIVES & LOCAL STUDIES

ATHERSLEY – CONT.

St. Helen's School, Athersley

- Logbooks, 1963-1990 (A-1444-E).
- Admission registers, 1968-1984 (A-1444-E).
- Administrative records, photographs and printed material, n.d. (A-1444-E).

St. Hilda's Juniors' School, Athersley

- Logbook, 1954-1975 (A-3517-E).
- Admission registers, 1954-1984 and 1991 (A-3517-E).

St. Michael's School, Athersley

- Photographs and brochures, 1960s-1970s (A-1901-E).

ARCHIVES & LOCAL STUDIES

BARNSLEY CENTRAL

Agnes Road Board School, Barnsley

- Primary logbooks, 1889-1972 (A-2106-E).
- Infant logbooks, 1906-1992 (A-1538-E).
- Infant admission registers, 1943-1992 (A-1538-E).
- Punishment book, 1949-1965 (A-1538-E).
- Financial records, photographs and other items, n.d. (A-1538-E).

Baker Street Church of England School, Barnsley

- Logbooks, 1871-1932 (A-2107-E).

Barnsley Central Cookery Centre

- Logbook, January 1908 - December 1923 (A-2207-E).

Barnsley Central Schools

- Logbook, 1897-1898 (A-2028-E).
- Logbooks, 1898-1964 (A-2108-E).

Barnsley College of Technology (formerly Barnsley Mining & Technical College)

- Governors' minutes, 1954-1987 (A-2208-E).
- Stock inventory, 1951 (A-72-E).
- Administrative records, pupil statistics, printed material and other records, 20th century (A-72-E).
- Reports, 1936 & 1947 (A-3770-E).

ARCHIVES & LOCAL STUDIES

BARNSLEY CENTRAL – CONT.

Barnsley Girls' High School

- Admission registers, 1913-1945 (A-72-E).
- Staff registers, 1905-1960 (A-72-E).
- School magazines, 1952-1968 (A-72-E).
- Photographs and other miscellaneous records, n.d. (A-72-E).
- Financial records and administration files, n.d. (A-674-E).
- Governors' minutes, 1924-1973 (A-2111-E).
- School magazines and other miscellaneous items, n.d. (SY-577-E).

Barnsley School Board

- Accounts' ledgers, 1871-1898 (A-3534-E).

Barnsley School of Arts and Crafts

- Minutes, 1954-1987 (A-2135-E).

Barnsley Secondary Technical School

- Governors' minutes, 1954-1973 (A-2136-E).

Barnsley Sixth Form College

- Logbook, 1979-1990 (A-72-E).
- Minutes, 1979-1990 (A-72-E).
- Administrative records, photographs and other records, n.d. (A-72-E).
- Minutes, 1988-1990 (A-674-E).
- Governors' reports, 1987-1990 (A-674-E).
- Financial papers, plans and prospectuses, 1980s-1990s (A-674-E).

ARCHIVES & LOCAL STUDIES



BARNSLEY CENTRAL – CONT.

Barnsley Technical Instruction Committee

- Minutes, 1897-1901 (A-2137-E).

Broadway School, Barnsley (formerly Broadway Technical Grammar School)

- Photographs and event programmes, 1950s-1970s (A-37-F).
- Panoramic pupil and staff photographs, 1959 & 1983 (A-3932-E).

Charter School, Barnsley

- Logbook, 1970-1987 (A-2109-E).
- Admission registers, 1969-1979 (A-2109-E).

Doncaster Road School, Barnsley

- Logbooks (Juniors), 1927-1949 (A-3225-E).
- Logbooks (Infants), 1906-1933 (A-3225-E).
- Admission registers (Juniors), 1915-1933 (A-3225-E).
- Admission registers (Infants), 1914-1933 (A-3225-E).
- Admission registers (both), 1937-1951 (A-3225-E).

Eldon Street Council Schools, Barnsley

- Logbooks, 1872-1964 (A-2110-E).

Grove Street Council Schools, Barnsley

- Logbooks, 1911-1964 (A-2112-E).
- Governors' minutes, 1947-1964 (A-2112-E).

ARCHIVES & LOCAL STUDIES

BARNSLEY CENTRAL – CONT.

Hall Balk School, Barnsley

- Logbook, 1976-1982 (A-2113-E).
- Photographs, printed material and other records, n.d. (A-72-E)
- Financial records, administration files and photographs, n.d. (A-674-E).

Holgate Grammar School, Barnsley

- Admission registers, 1888-1923 (A-3428-E).
- Pupil files, 1920s-1970s (A-3428-E).
- Staff registers, 1888-1953 (A-3428-E).
- Photographs and other miscellaneous items, n.d. (A-3428-E).
- Staff photographs, 1960s (A-3622-E).
- Norman Goddard collection: photographs, pamphlets and other miscellaneous records, 20th century (A-3781-E).

Holy Cross Deanery Church of England School, Barnsley

- Logbook, 1967-1998 (A-3487-E).
- Admission registers, 1967-1998 (A-3487-E).
- Managers' minutes, 1969-1989 (A-3487-E).
- Other miscellaneous items, n.d. (A-3487-E).

Honeywell School, Barnsley*

- Admission registers, 1973-1984 (A-242-E).
- Photographs and other miscellaneous items, 20th century (A-242-E).

* See also *Raley Secondary Modern*.

ARCHIVES & LOCAL STUDIES

BARNSLEY CENTRAL – CONT.

Longcar Central Schools, Barnsley

- Governors' minutes, 1947-1964 (A-2116-E).

Longcar Mixed Juniors' School, Barnsley

- Logbook, 1972-1985 (A-2117-E).
- Admission register, 1970-1977 (A-2117-E).

Old Town Infants' School, Barnsley

- Logbook, 1878-1927 (A-2118-E).

Park Road Board School, Barnsley (later a mixed Juniors' school)

- Logbooks, 1872-1973 (A-2119-E).

Queens Road Domestic School, Barnsley

- Logbook, 1911-1961 (A-2120-E).

Racecommon Road Boys' Secondary School, Barnsley

- Logbook, 1955-1964 (A-2121-E).
- Admission registers, 1924-1964 (A-2121-E).
- Governors' minutes, 1947-1964. (A-2121-E).

ARCHIVES & LOCAL STUDIES

BARNSLEY CENTRAL – CONT.

Racecommon Road Girls' Secondary School, Barnsley

- Logbooks, 1907-1970 (A-2122-E).
- Admission registers, 1929-1972 (A-2122-E).

Racecommon Road Infants' School, Barnsley

- Logbooks, 1907-1985 (A-2123-E).
- Admission registers, 1956-1985 (A-2123-E).

Raley Secondary Modern School, Barnsley (later Honeywell School)

- Logbooks, 1948-1988 (A-2124-E).
- Governors' minutes, 1947-1964 (A-2124-E).
- Admission registers, 1933-1975 (A-242-E).
- Photographs, printed material and other records, n.d. (A-242-E).

St. Edward's Church of England Infant School, Barnsley

- Logbook, 1867-1936 (A-2125-E).

St. George's National Infants' School, Barnsley

- Logbooks, 1884-1907 (A-2127-E).

St. George's Boys' School, Barnsley

- Logbook, 1863-1874 (A-1621-Z).

ARCHIVES & LOCAL STUDIES

BARNSLEY CENTRAL – CONT.

St. George's Girls' School, Barnsley

- Logbook, 1874-1905 (A-2128-E).

St. John's Juniors' Boys' School, Barnsley

- Logbooks, 1882-1939 (A-2129-E).

St. John's National Girls' School, Barnsley

- Logbooks, 1862-1929 (A-2130-E).

St. John's Infants' School, Barnsley

- Logbooks, 1866-1953 (A-2131-E).

St. John's Church of England Primary School, Barnsley

- Logbook, 1953-1960 (A-2132-E).

St. Mary's Church of England Boys' School, Barnsley

- Logbooks, 1867-1957 (A-3466-E).
- Admission registers, 1914-1967 (A-3466-E).
- Photographs, 1920s-1960s (A-3466-E).

ARCHIVES & LOCAL STUDIES



BARNSLEY CENTRAL – CONT.

St. Mary's Church of England Girls' School, Barnsley

- Logbook, 1953-1964 (A-2133-E).

Salem Temporary Girls' School, Barnsley

- Logbook, 1893-1926 (A-2134-E).

ARCHIVES & LOCAL STUDIES



BARUGH GREEN

Barugh Green Primary School*

- Logbooks, 1902-1920 (A-3484-E).
- Admission registers, 1964-1995 (A-3484-E).

Whinmoor School, Barugh Green

- Logbooks, 1973-1987 (A-2139-E).
- Admission register, 1973-1984 (A-2139-E).

ARCHIVES & LOCAL STUDIES

BIRDWELL

Birdwell Board School (Boys' school)

- Admission register, 1943-1973 (A-3599-E).
- Record of corporal punishment, 1930-1953 (A-3599-E).

Birdwell Board School (Girls' school)

- Admission registers, 1893-1973 (A-3599-E).

Birdwell Board School (Infants' school)

- Admission register, 1932-1950 (A-3599-E).

ARCHIVES & LOCAL STUDIES



BOLTON UPON DEARNE

Bolton upon Dearne School Board / District Education Sub-Committee

- Minutes, 1886-1936 (A-501-E).

Carrfield County Primary School, Bolton upon Dearne

- Logbook, 1956-1982 (A-3458-E).
- Admission register, 1976-1987 (A-3458-E).

Heather Garth Primary School, Bolton upon Dearne

- Admission registers, 1976-2001 (A-3515-E).

ARCHIVES & LOCAL STUDIES



BRIERLEY

Brierley Church of England School

- Admission registers, 1873-2006 (A-3907-E).

ARCHIVES & LOCAL STUDIES

CARLTON

Carlton Board Infants' School

- Logbook, 1895-1913 (A-1938-E).

Carlton Council Boys' School

- Logbook, 1908-1934 (A-1938-E).
- Admission register, 1909-1939 (A-1938-E).

Carlton Infants' School

- Logbook, 1971-1985 (A-2140-E).

Carlton Juniors' and Infants' School

- Admission register, 1939-1953 (A-1938-E).
- Photographs, 1950s (A-1444-E).

Carlton New Boys' School

- Logbook, 1877-1910 (A-1938-E).

Carlton Spring Lane School

- Logbook, 1939-1970 (A-1938-E).

ARCHIVES & LOCAL STUDIES

CAWTHORNE

Cawthorne Juniors' and Infants' School*

- Logbooks, 1871-1938 (A-1433-E).

** Prior to 1904, the school was a Girls' School.*

Note: Cawthorne Jubilee Museum also holds records for schools in the area. See TNA Discovery catalogue for details:

<https://discovery.nationalarchives.gov.uk/details/a/A13531692>

ARCHIVES & LOCAL STUDIES

CUDWORTH

Cudworth Middle School

- Logbook, 1975-1990 (A-2144-E).
- Admission registers, 1976-1990 (A-2144-E).
- Corporal punishment register, 1978-1984 (A-2144-E).
- Photographs, 20th century (A-739-E).

Cudworth Secondary Modern Boys' School

- Logbooks, 1935-1965 (A-2141-E).
- Admission registers, 1935-1959 (A-2141-E).
- Corporal punishment register, 1935-1965 (A-2141-E).
- School scrapbook, 1958-1964 (A-2141-E).

Cudworth Secondary Modern Girls' School

- Logbooks, 1935-1974 (A-2142-E).
- Admission registers, 1935-1970 (A-2142-E).
- Corporal punishment register, 1935-1946 (A-739-E).

Cudworth School Board/ District Education Sub-Committee

- Minutes, 1898-1904 (A-739-E).
- Cudworth annual education returns (microfilm), 19th-20th centuries (SY-131-E).

Pontefract Road School, Cudworth

- Evening school logbook, 1909-1935 (A-739-E).
- Attendance records, 1923-1934 (A-739-E).
- Logbooks, 1925-1946; 1970-1972; 1983-1987 (A-3282-E).

ARCHIVES & LOCAL STUDIES

CUDWORTH – CONT.

Snydale Road Council Girls' School, Cudworth

- Admission registers, 1915-1935 (A-2143-E)
- Other miscellaneous items, n.d. (A-739-E).

ARCHIVES & LOCAL STUDIES

DARFIELD

Darfield Church of England School

- Logbooks, 1905-1995 (A-3733-E).
- Admission registers, 1894-1997 (A-3733-E).
- Other miscellaneous items, n.d. (A-3733-E).

Darfield Foulstone School

- Logbooks, 1941-1994 (A-3465-E).
- Admission registers, 1941-2006 (A-3465-E).
- Corporal punishment register, 1970-1984 (A-3465-E).
- Other miscellaneous items, n.d. (A-3465-E).

Darfield School Board*

* See *Ardsley/ Darfield District School Board*.

Low Valley Church of England Infants' School, Darfield

- Logbooks, 1904-1937 (A-3734-E).
- Other miscellaneous items, n.d. (A-3734-E).

Shroggs Head Infants' School, Darfield

- Logbooks, 1927-1985 (A-2145-E).
- Admission register, 1976-1985 (A-2145-E).

ARCHIVES & LOCAL STUDIES

DARTON

Darton and Kexbrough Infants' School

- Logbooks, 1954-1990 (A-1729-E).

Darton County Primary School

- Logbooks, 1899-1959 (A-3530-E).
- Admission registers (A-3530-E).
- Other miscellaneous items, n.d. (A-3530-E).

Darton and Kexbrough Juniors' School

- Logbooks, 1968-1984 (A-1729-E).

Darton Hall County Secondary Boys' School

- Logbooks, 1935-1963 (A-2146-E).
- Admission registers, 1935-1963 (A-2146-E).

Darton Hall County Secondary Girls' School

- Logbooks, 1963-1991 (A-2147-E).
- Admission registers, 1963-2006 (A-2147-E).
- Other miscellaneous items, n.d. (A-2147-E).

Darton High School

- Logbooks, 1963-1991 (A-2148-E).
- Admission registers, 1963-2006 (A-2148-E).
- Other miscellaneous items, n.d. (A-2148-E).

ARCHIVES & LOCAL STUDIES

DARTON – CONT.

Darton Evening School

- Logbook, 1900-1942 (A-2149-E).

Darton Mapplewell (Wellgate) Infants' School*

- Logbooks, 1878-1999 (A-3041-E).
- Admission registers, 1973-1996 (A-3041-E).

** Previously known as Mapplewell Provided School.*

Darton School Board/ District Education Sub-Committee

- Minutes, 1875-1929 (A-2150-E).

ARCHIVES & LOCAL STUDIES

DODWORTH

Dodworth Church of England Girls' School

- Logbook, 1887-1942 (A-2152-E).

Dodworth Church of England Infants' School

- Logbooks, 1893-2001 (A-2153-E).

Dodworth School Board/ District Education Sub-Committee

- Minutes, 1908-1929 (A-2151-E).

Dodworth Wesleyan Infants' School

- Logbook, 1875-1917 (A-2156-E).

Gilroyd Church School, Dodworth

- Logbook, 1870-1895 (A-2154-E).

Green Road Council School, Dodworth

- Logbooks, 1900-1962 (A-2155-E).

ARCHIVES & LOCAL STUDIES

DUNFORD

Hazlehead Juniors' and Infants' School, Dunford

- Logbooks, 1900-1985 (A-2157-E).
- Admission registers, 1902-1985 (A-2157-E).
- Punishment book, 1905-1938 (A-2157-E).

Town Head Council School, Dunford Bridge

- Logbooks, 1903-1963 (A-2158-E).
- Admission registers, 1903-1963 (A-2158-E).

ARCHIVES & LOCAL STUDIES



ELSECAR

Elsecar Mixed School, King Street

- Plans of the school, 1908 (A-3558-E).

ARCHIVES & LOCAL STUDIES

GAWBER

Gawber Church of England School

- Logbook, 1941-1951 (A-2160-E).

Gawber National Infants' School

- Logbook, 1871-1911 (A-2159-E).

Gawber Remedial School

- Logbook, 1973-1981 (A-2161-E).

ARCHIVES & LOCAL STUDIES



GOLDTHORPE

Dearne Goldthorpe Primary School

- Boys' logbooks, 1898-1935 (A-3170-E).
- Juniors' and Infants' logbooks, 1986-2000 (A-3170-E).
- Admission registers, 1898-2001 (A-3170-E).

Sacred Heart School, Goldthorpe

- Financial records, 1973-1990 (A-1289-E).
- Prospectuses, 1980s (A-1289-E).
- Other miscellaneous items, n.d. (A-1289-E).

ARCHIVES & LOCAL STUDIES



GREAT HOUGHTON

Great Houghton Church of England Juniors' and Infants' School

- Logbooks, 1908-1992 (A-1531-E).
- Admission registers, 1916-1992 (A-1531-E).
- Governors' minutes, 1982-1991 (A-1531-E).
- Other miscellaneous items, n.d. (A-1531-E).

ARCHIVES & LOCAL STUDIES



GRIMETHORPE

Grimethorpe Council Boys' School

- Admission registers, 1913-1957 (A-3539-E).

ARCHIVES & LOCAL STUDIES

HIGHAM

Higham Evening School

- Stock book, 1909-1920 (A-3740-E).

Higham Infants' School

- Logbook, 1891-1899 (A-2162-E).

Higham Church of England School*

- Logbooks, 1894-1944 (A-2163-E).
- Admission registers, 1874-1910, 1943-1944 (A-2163-E).
- Accounts and stock book, 1904-1944 (A-2163-E).

**Also previously known as Higham (and Barugh) National School*

ARCHIVES & LOCAL STUDIES

HOYLAND

Hoyland Common Juniors' and Infants' School

- Logbooks, 1876-1992 (A-3473-E).
- Juniors' admission registers, 1940-1993 (A-3473-E).
- Infants' admission registers, 1982-1994 (A-3473-E).
- Other miscellaneous items, n.d. (A-3473-E).

Hoyland Council Girls School

- Logbooks, 1891-1933 (A-2164-E).

Hoyland Evening School

- Logbooks, 1895-1909 (A-2165-E).

Hoyland Nether School Board/ District Education Sub-Committee

- Minutes, 1873-1904; 1924-1944 (A-2168-E).

Hoyland Nether Boys' Board School (later Market Street Mixed Juniors' School)

- Logbooks, 1876-1985 (A-2170-E).
- Admission registers, 1949-1981 (A-2170-E).

Hoyland Nether Council Infants' School (later Market Street Infants' School)

- Logbooks, 1897-1966 (A-2169-E).
- Admission register, 1957-1966 (A-2169-E).

HOYLAND – CONT.

Hoyland Nether Girls' Board School

- Logbook, 1876-1891 (A-3143-E).

Market Street Primary School (later West Meadows Primary School)

- Admission register, 1985-1998 (A-3529-E)

King Street Council School, Hoyland

- Logbook, 1936-1985 (A-2166-E).
- Punishment book, 1919-1933 (A-2166-E).

Kirk Balk School, Hoyland

- Governors' minutes, 1942-1944 (A-3559-E).

West Street Infant School, Hoyland

- Logbooks, 1934-1985 (A-2167-E).
- Admission registers, 1957-1985 (A-2167-E).
- Other miscellaneous items, n.d. (A-2167-E).

ARCHIVES & LOCAL STUDIES



HOYLANDSWAINE

Hoylandswaine Juniors' and Infants' School

- Newsletters, 1990-1991 (A-1366-E).
- Printed material, n.d. (A-1366-E).

ARCHIVES & LOCAL STUDIES



HOYLE MILL

Hoyle Mill Council School

- Logbook, 1914-1942 (A-2171-E).

Hoyle Mill Infants' School

- Logbook, 1911-1923 (A-2172-E).
- Attendance registers, 1881-1889 (A-2030-E).

Hoyle Mill Juniors' School

- Photograph of football team, 1937-1938 (A-3754-E).

ARCHIVES & LOCAL STUDIES



HUNSHELF

Council School, Green Moor

- Logbook, 1944-1982 (A-2173-E).
- Admission register, 1901-1938 (A-2173-E).

ARCHIVES & LOCAL STUDIES



JUMP

Jump Infants School

- Photograph album, A-1874-F

ARCHIVES & LOCAL STUDIES



KENDRAY

Kendray St. Joseph's Roman Catholic School

- Logbooks, 1933-1986 (A-1939-E).
- Admission registers, 1933-1992 (A-1939-E).
- Financial records, photographs and printed material, 20th century (A-1939-E).

Oaks County Secondary School*

**See Ardsley Oaks (Senior) School (A-2104-E) – which later moved to Kendray*

ARCHIVES & LOCAL STUDIES

KEXBROUGH

Kexbrough Infants' School

- Logbooks, 1866-1926 (A-1729-E).

Kexbrough Juniors' School*

- Logbook, 1984-1990 (A-1729-E).

* See also *Darton and Kexbrough Juniors' School*.

Kexbrough National School

- School assessment, 1895 (A-3107-E).

ARCHIVES & LOCAL STUDIES



LANGSETT

Langsett Council School

- Logbooks, 1875-1937 (A-2174-E).
- Admission register, 1899-1936 (A-2174-E).

ARCHIVES & LOCAL STUDIES

LUNDWOOD

Burton Grange Nursery School, Lundwood

- Admission registers, 1946-1974 (A-3629-E).

Littleworth County Modern School, Lundwood

- Governors' minutes, 1947-1964 (A-2115-E).

Littleworth Seniors' School, Lundwood*

* See *Priory School*.

Priory School, Lundwood (formerly Littleworth Seniors' School)

- Logbook (copy), 1931-1964 (A-3585-E).
- Admission registers, 1931-1992 (A-3424-E).
- Governors' papers, 1979-1984 (A-3424-E).
- Other miscellaneous items, n.d. (A-3424-E).

ARCHIVES & LOCAL STUDIES



MAPPLEWELL

Mapplewell Provided School*

* See A-3041-E – Darton Mapplewell Infant School.

ARCHIVES & LOCAL STUDIES

MONK BRETTON

Monk Bretton School Board/ District Education Sub-Committee

- Minutes, 1885-1892; 1897-1904 (A-2175-E).
- Minutes (microfilm), 1892-1897 (SY-130-E).

Monk Bretton National School

- Logbooks, 1863-1931 (A-2176-E).

Monk Bretton Infants' School (later Infants' and Juniors' School)

- Logbooks, 1902-1941 (A-2177-E).
- Admission register, 1896-1936 (A-2177-E).

Smithies Board School, Monk Bretton (mixed Juniors' and Infants' School)

- Logbooks, 1895-1933 (A-2178-E).

ARCHIVES & LOCAL STUDIES



OXSPRING

Oxspring School Board/ District Education Sub-Committee

- Minutes, 1877-1904 (A-2179-E).

ARCHIVES & LOCAL STUDIES



PENISTONE

Penistone Grammar School

- Large archive covering 16th to 21st centuries (SY-45-E).
- Minutes, 1888-1956 (A-2180-E).

Springvale Juniors' and Infants' School, Penistone

- Prospectuses, 1982-1987; 1990-1991 (A-1817-E).

ARCHIVES & LOCAL STUDIES



ROYSTON

Meadstead Primary School, Royston

- Logbook, 1973-1997 (A-3483-E).

Royston National School

- Stock books, 1916-1930 (A-3741-E).

Royston School Board

- Governors' minutes, 1894-1929 (A-2181-E).

Royston Seniors' School

- Photograph from the opening ceremony, 1934 (A-3753-E).

Summerfield School, Royston (formerly Royston Board School)

- Logbooks, 1895-1986 (A-24-E).
- Administration files, financial papers, correspondence, photographs and other miscellaneous items, n.d. (A-24-E).
- Photographs, 20th century (A-2046-E).

ARCHIVES & LOCAL STUDIES



STAINBOROUGH

Hood Green Church of England School, Stainborough

- Logbooks, 1885-1982 (A-2182-E).
- Admission register, 1884-1982 (A-2182-E).

Northern College, Stainborough

- Miscellaneous papers, 1960s-1970s (SY-330-E).

Wentworth Castle College of Education, Stainborough

- Minutes, 1972-1975 (A-72-E).
- Administrative and financial papers, and other records, 20th century (A-72-E).
- Large archive currently being catalogued* (SY-247-E).
- Further records and photographs, n.d. (A-3488-E).

** Consult archive staff for more information on this collection.*

ARCHIVES & LOCAL STUDIES



STOCKSBRIDGE

Deepcar National Infants' School, Stocksbridge

- Logbooks, 1883-1967 (A-2183-E).

ARCHIVES & LOCAL STUDIES



TANKERSLEY

Tankersley School Board/ District Education Sub-Committee

- Various minutes, 1904-1921 (A-2184-E).

ARCHIVES & LOCAL STUDIES



THURLSTONE

Thurlstone Juniors' and Infants' School

- Administrative records, pupil records, and other miscellaneous items, 20th century (A-1862-E).

Thurlstone School Board/ District Education Sub-Committee

- Minutes, 1877-1938 (A-2185-E).

ARCHIVES & LOCAL STUDIES



THURNSCOE

Houghton Road Boys' School (later Thurnscoe Council Juniors' Boys' and Dearne Thurnscoe County Primary Boys' School)

- Logbooks, 1897-1966 (A-917-E).

Houghton Road Girls' School (later Thurnscoe Council Juniors' Girls' and Dearne Thurnscoe County Primary Girls' School)

- Logbooks, 1897-1921; 1932-1967 (A-917-E).

Houghton Road Infants' School, Thurnscoe

- Logbooks, 1921-1931; 1934-1971 (A-2186-E).

St Hilda's School, Thurnscoe East

- Admission register, 1925-1931 (A-2266-E).

The Hill Juniors' and Infants' Schools, Thurnscoe East

- Juniors' logbook, 1934-1992 (A-3456-E).
- Juniors' admission registers, 1953-2004 (A-3456-E).
- Infants' logbooks, 1926-1991 (A-3456-E).
- Infants' admission registers, 1926-2005 (A-3456-E).
- Nursery department's admission register, 1945-1948 (A-3456-E).

Thurnscoe Comprehensive School (later Dearne High School)

- Pupils' working files, administrative records, photographs, printed material and other items, 20th century (A-917-E).

ARCHIVES & LOCAL STUDIES



THURNSCOE (CONT.)

Thurnscoe School Board/ District Education Sub-Committee

- Minutes, 1895-1936 (A-501-E).

ARCHIVES & LOCAL STUDIES



WILTHORPE

Wilthorpe Nursery School

- Logbooks, 1970-1982 (A-2138-E).

ARCHIVES & LOCAL STUDIES

WOMBWELL

Aldham Street Juniors' and Infants' School, Wombwell

- Logbook, 1974-1995 (A-1931-E).
- Admission registers, 1974-1995 (A-1931-E).
- Photographs, 1980s-1990s (A-1931-E).

Barnsley Road School, Wombwell

- Logbooks, 1896-1983 (A-1861-E).
- Infants' admission registers, 1937-1980 (A-1861-E).
- Corporal punishment register, 1907-1976 (A-1931-E).

Highfield Juniors' School, Wombwell

- Admission registers, 1953-2004 (A-3630-E).

John Street School, Wombwell

- Logbook, 1974-1988 (A-1861-E).
- Minutes, 1971; 1989-1992 (A-1861-E).
- Logbooks, 1921-1935; 1964-1974 (A-1931-E).
- Admission registers, 1954-1974 (A-1931-E).

Park Street School, Wombwell

- Plan of the school, c.1890s (A-3597-E).
- Boys' department corporal punishment book, 1931-1953 (A-3856-E).
- Admission registers, 1902-2003 (A-3883-E).
- Logbooks, 1894-1990 (A-3883-E).
- Administration, cuttings, photographs, 1892-2006 (A-3883-E).

ARCHIVES & LOCAL STUDIES

WOMBWELL – CONT.

Wombwell British School

- Logbook, 1871-1889 (A-1931-E).

Wombwell High School (formerly Boys' Secondary School)

- Logbooks, 1929-1970 (A-1937-E).
- Wombwell Selective Seniors' School corporal punishment book, 1931-1974 (A-1937-E).

Wombwell National School

- Logbook, 1863-1895 (A-3792-E)

Wombwell Open Air School

- Logbook, 1932-1980 (A-2187-E).

Wombwell School Board/ District Education Sub-Committee

- Minutes, 1875-1888; 1917-1929 (A-501-E).

ARCHIVES & LOCAL STUDIES

WORSBROUGH

Blacker Council School, Worsbrough (Juniors' mixed and Infants')

- Logbooks, 1907-1973 (A-2192-E).
- Admission register, 1915-1973 (A-2192-E).
- Corporal punishment register, 1908-1933 (A-2192-E).

Blacker Hill Church of England Infants' School, Worsbrough

- Logbooks, 1875-1933 (A-2193-E).
- Logbooks, 1973-1992 (A-1537-E).
- Admission registers, 1973-1992 (A-1537-E).
- Financial records, 1973-1992 (A-1537-E).
- School newsletters, 1985-1992 (A-1537-E).
- Printed material, photographs and other miscellaneous items , n.d. (A-1537-E).

Blacker Evening Continuation School, Worsbrough

- Logbooks, 1894-1903; 1907-1927 (A-2194-E).

Elmhirst School, Worsbrough

- Governors' report, 1999 (A-3179-E).
- Newsletters, 1998-2001 (A-3179-E).
- Other miscellaneous items (A-3179-E).

Lobwood Infants', Worsbrough Bridge

ARCHIVES & LOCAL STUDIES

- Logbook, 1973-1985 (A-2195-E).
- Admission registers, 1992-2001 (A-3582-E).

WORSBROUGH – CONT.

Lobwood Juniors' and Infants' School, Worsbrough Bridge

- Admission registers, 1985-1997 (A-3581-E).

Worsbrough Church of England School

- School managers' minutes, 1904-1981 (A-143-E).

Worsbrough Common Board School

- Logbook, 1878-1903 (A-2199-E).

Worsbrough Common Boys' School

- Logbooks, 1878-1932 (A-2196-E).

Worsbrough Common Girls' School

- Logbooks, 1898-1928 (A-2197-E).

Worsbrough Common Infants' School

- Logbooks, 1903-1967 (A-2198-E).
- Logbook (microfilm), 1903-1928 (SY-294-E).

Worsbrough Council School Wesleyan Day School

ARCHIVES & LOCAL STUDIES

- Logbook, 1871-1929 (A-2190-E).

WORSBROUGH – CONT.

Worsbrough Dale Boys' Council School

- Logbook, 1929-1963 (A-2202-E).
- Admission registers, 1917-1985 (A-2202-E).
- Corporal punishment book, 1928-1945 (A-2202-E).

Worsbrough Dale Church of England Infants' School

- Logbooks, 1877-1966 (A-2204-E).
- Logbooks (microfiche), 1877-1966 (SY-294-E).

Worsbrough Dale Council Infants' School

- Logbooks, 1924-1973 (A-2191-E).
- Admission registers, 1960-1973 (A-2191-E).

Worsbrough Dale County Primary School*

* See A-2202-E.

Worsbrough Dale Girls' Council School

- Logbooks, 1895-1947 (A-2203-E).
- Admission registers, 1924-1947 (A-2203-E).

Worsbrough Dale High Street School (St. Thomas)

- Logbook, 1867-1891 (A-2200-E).

ARCHIVES & LOCAL STUDIES

- Logbook (microfiche), 1867-1891 (SY-294-E).

WORSBROUGH – CONT.

Worsbrough Dale Manual Instruction Centre

- Logbook, 1910-1941 (A-2206-E).

Worsbrough Dale National Mixed School

- Logbooks, 1892-1966 (A-2201-E).
- Admission registers, 1916-1941 (A-2201-E).
- Logbooks (microfiche), 1892-1966 (SY-294-E).

Worsbrough Dale Nursery School

- School prospectuses, c.1988 (A-463-E).

Worsbrough Dale Secondary School*

* See A-3550-E – Worsbrough High School.

Worsbrough Dale Wesleyan Infants' School*

- Logbook, 1876-1924 (A-2205-E).

* See also Worsbrough Dale Council Infants' School.

Worsbrough High School

ARCHIVES & LOCAL STUDIES

- Admission registers, 1950-1996 (A-3550-E).
- Governors' reports to parents, 1988-1995 (A-3179-E).
- Other miscellaneous items, n.d. (A-3179-E).

WORSBROUGH – CONT.

Worsbrough Joint Nursing Committee

- Minutes, 1914-1918 (A-2189-E).

Worsbrough School Board

- Minutes, 1875-1929 (A-2188-E).
- Minutes (microfiche), 1875-1929 (SY-294-E).

ARCHIVES & LOCAL STUDIES

WORTLEY

Wortley Church of England School

- Logbooks, 1863-1967 (A-1274-E).
- Admission registers, 1883-1969 (A-1274-E).
- Other administrative records, 19th-20th centuries (A-1274-E).

Wortley Evening Institute

- Cash book, 1933-1939 (A-2264-E).